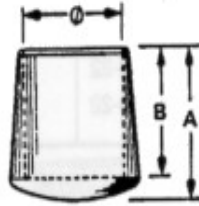


11 - PUNTALI ESTERNI IN PLASTICA

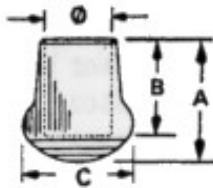
11.1 PUNTALI IN PVC

codice	Ø tubo	A	B
4064	2	7,5	6
3635	3	9,5	8
2346	4	11	9
4065	5	13	10
836	6	14	11
3404	7	14	11
0837	8	16	13
	9	17	13
0838	10	18	14
0839	12	21	17
	13	21	17
840	14	23	18
841	16	25	20
842	18	27	22
	19	28	23
843	20	30	24
844	22	32	26
845	24-25	36	30
3545	26	37	31
3546	28	38	32
3547	30	41	34
7955	32	43	39
	35	47	40



11.2 PUNTALI A PERA IN PVC

codice	Ø tubo	A	B	C
2313	20	36	27	32
2296	28	48	34	44
2272	30	42	34	42
2305	32	49	34	45
2446	35	52	36	48
1487	38	57	40	53
2420	40	60	42	56



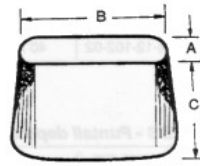
11.3 PUNTALI ESTERNI IN PE

codice	Ø tubo	A	B	C
9200	50	41	32	64



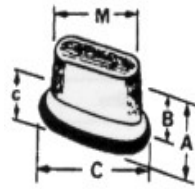
11.4 PUNTALI ESTERNI OVALI IN PVC

codice	A	B	C
3750	15	30	23
3751	18	36	27
3752	20	40	28



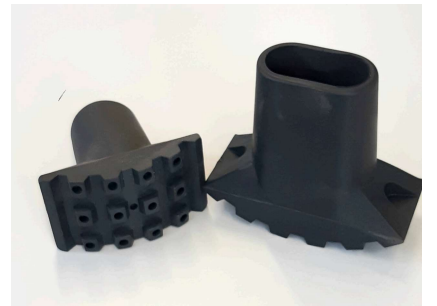
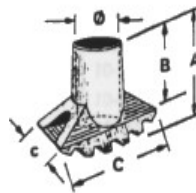
11.5 PUNTALI SCALA A PERA OVALI IN PVC

codice	misura	A	B	C
2541	20x40	41	34	52x32
2304	25x50	50	43	65x40



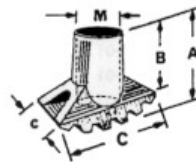
11.6 PIEDI SCALA ARTIGLIO IN PVC

codice	Ø tubo	A	B	C
2428	30	69	53	78x42
2329	32	61	59	81x46
2437	35	78	62	87x48
4875	38	83	67	94x52
2470	40	95	73	97x54



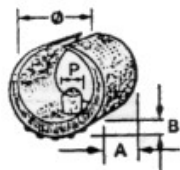
11.7 PIEDI SCALA ARTIGLIO OVALE

codice	Misura	A	B	C
2275	20x40	72	56	89x38
2568	25x50	89	76	114x46



11.8 SOTTOPIEDE A PINZA IN POLITENE

codice	misura	Ø piolo	A	B
2928	14-16	5,5	18	3,5
	16-18	5,5	19	3,5
1045	18-20	5,5	20	3,5
3530	20-22	5,5	22	4
1555	24-26	5,5	25	5
1555	24-26	7,5	25	5
4373	28-30	7,5	30	5,5



11.9 PUNTALI ANGOLARI PER SCAFFALATURE

codice	misura	Ø piolo	A	B
0203	35X35	5,5	18	3,5
0172	35X55	SINISTRI	19	3,5
0194	35X55	DESTRI	30	5,5

